

The powerful surgical suction device

ATMOS® Record 55

ATMOS® Record 55 DDS

**ROBUST
EASY HANDLING
SILENT**



ATMOS® Record 55



The powerful allrounder!

The ATMOS® Record 55 is most suitable for the versatile use in OT due to the high suction performance and the powerful vacuum.

The ATMOS® Record 55 is the first choice when a silent and powerful suction system is required.

Improved technology makes the ATMOS® Record 55 a reliable system for many surgical applications:

- Visceral surgery
- Mouth, face and jaw surgery
- Thorax surgery
- Aesthetic plastic surgery
- General surgery
- Orthopaedic surgery
- Vascular surgery

In the area of aesthetic plastic surgery the ATMOS® Record 55 is especially used in the liposuction.

The advantages of the ATMOS® Record 55 at a glance:

- Powerful:
The airflow rate of 55 litres per minute always provides a free vision in the operating field.
- Almost noiseless:
The low operation noise does not affect the concentration in the OR.
- Easy handling
- Optimal hygiene:
The modern canister systems and the bacterial filters protect staff and patients.
- Reliable:
The approved ATMOS technology without the risk of breakdown.
- No breakdown caused by blocked bacterial filter.
- The canister system is customized to your needs:
Disposable and reusable systems can be used.

ATMOS® Direct-Docking-System (DDS)

Autoclavable canister reduces work efforts to a minimum.

The innovation of the ATMOS® Record 55 is in the detail:


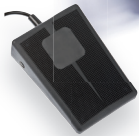
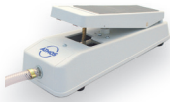
- No hose connection required - „plug and play“.
- Changeover lever for easy handling.
- Hydrophobic bacterial filter integrated in the canister.
- Canisters are easy to mount and demount.
- Easy to clean contours and surfaces.

Your advantages:

- Easy handling.
- Wrong hose connections are excluded.
- Easy, quick and thorough reprocessing.
- Time-saving during the start-up of the device.

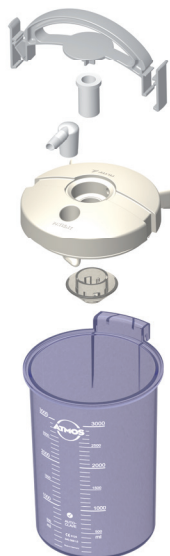
ATMOS® Record 55 DDS — The secure solution!

Our order recommendation:

	REF
	ATMOS® Record 55 DDS (2 x 3 l canisters) 444.0930.0
	Foot switch For switching on and off the device. 443.0755.0
	Foot regulator set for the ATMOS® Record 55 DDS for vacuum control 443.0770.0

Detailed information:

Further information about the ATMOS® Record 55 DDS and possible accessories you can find on the following pages.



Changeover lever

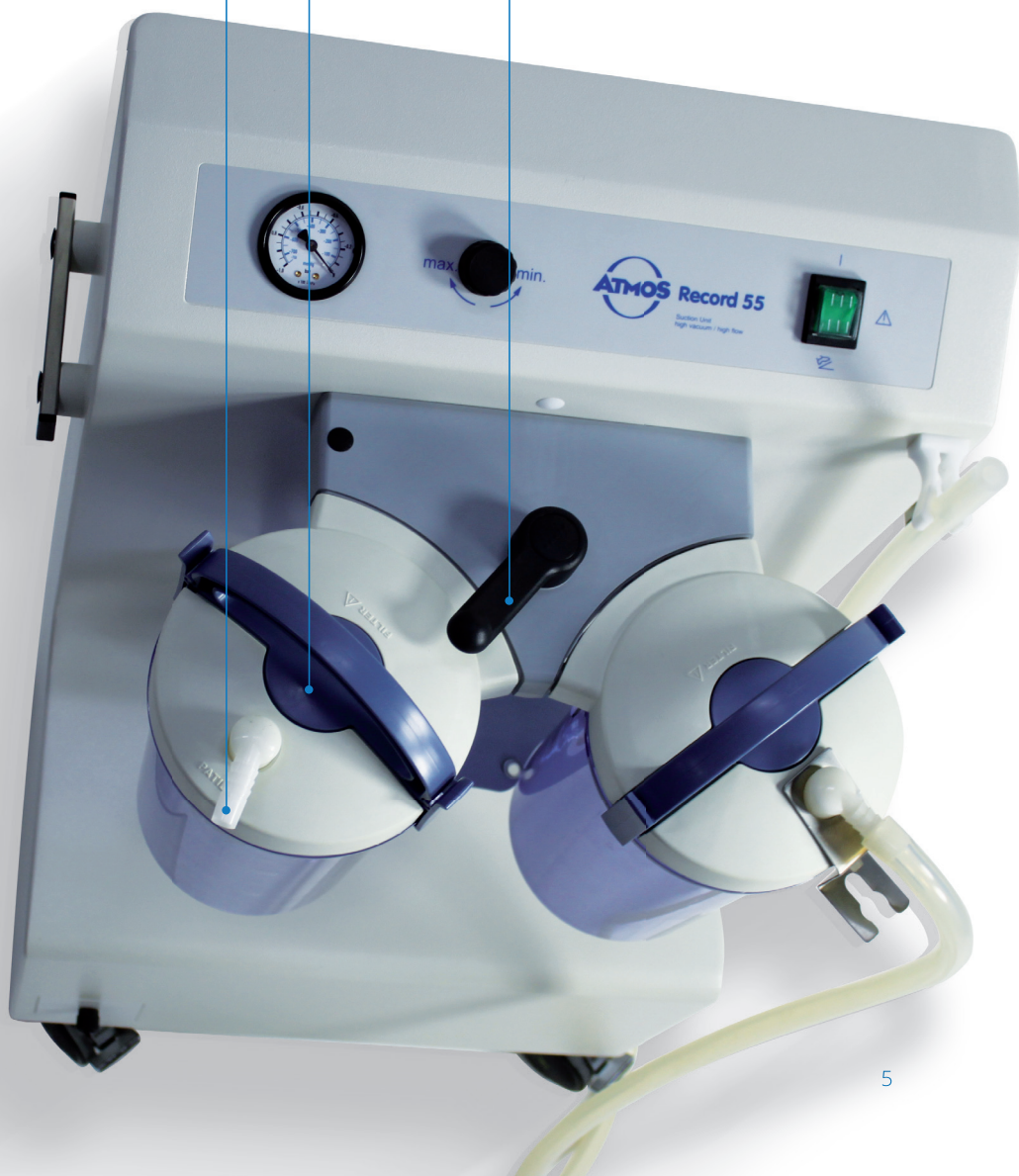
For comfortable selection of the collection canister during trolley operation.

Quick exchange of bacterial filter

Protective mechanism for the device with an extended filter surface.

Hose connection with twisted inlet

Reduces foam formation and increases filter service life.



ATMOS® Record 55 — with standard rail

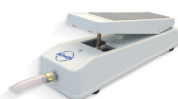
Basic unit:



or



or



	REF
ATMOS® Record 55 With standard rail	443.0700.0
Safety canister 250 ml With integrated DDS-bacterial filter overflow stop, incl. adapter for arthroscopy (shaver, lavages), oral and maxil- lofacial surgery, liposuction etc.	444.0646.1
Foot switch For switching on and off the device.	443.0755.0
Foot regulator set For the regulation of the vacuum.	443.0770.0


With Receptal® canisters:




or

	REF
Receptal® package 2 x 3 l	444.0029.0
Receptal® package 2 x 2 l	444.0028.0
Changeover lever	340.0096.0

With Serres® canisters:

		REF
	3 x Serres® dev. holder	340.0095.0
	Changeover lever	340.0096.0
	2 x Serres® canister 2 l	310.0402.0
	Serres® suction bag 2 l with gel-ling agent not autoclavable, 22 pcs.	310.0400.0
	or	
	2 x Serres® canister 3 l	310.0403.0
	Serres® suction bag 3 l with gel-ling agent not autoclavable, 20 pcs.	310.0401.0

With reusable glass secretion canisters:

		REF
	2 x Graduated secretion canister 3 l height 247 mm, Ø 145 mm	444.0033.0
	or	
	2 x Graduated secretion canister 5 l height 302 mm, Ø 169 mm	444.0034.0
	2 x Secretion canister lid incl. stan- dard rail holder	444.0650.0
	Socket nipple set Consisting of: Double socket nipple, hose reducer, mechanical overflow safety	444.0640.0

ATMOS® Record 55 DDS

ATMOS® Record 55 DDS (2 x 3 l canister)	REF
<p>Mobile surgical suction unit for high demands Quiet running, infinitely variable vacuum control, damped vacuum display, change-over for canister selection, for direct docking system canisters, connection for foot controller</p> <p>Technical data:</p> <p>1 Air-flow rate of pump: 55 ± 3 l/min, vacuum -98 kPa/-735 mmHg at sea level, 230 V~, 50/60 Hz, dimensions (H x W x D): 940 x 500 x 390 mm Included in delivery: basic unit, operating instructions, mains cable, 2 DDS canisters 3 l, 2 DDS canister lids, 2 DDS canister handles, 2 DDS splash protections, 10 DDS-bacterial filters with integrated oversuction stop, DDS hose adapter set (Ø 6 mm / Ø 10 mm), suction hose Ø = 6 mm, L = 2.10 m</p>	444.0930.0
<p>ATMOS® Record 55 DDS (2 x 5 l canister) Scope of delivery as mentioned above, but with 2 x 5 l DDS canister</p>	444.0940.0
Accessories for ATMOS® Record 55 DDS	REF
<p>2 DDS-secretion canister, plastic 1.5 l, autoclavable Height 146 mm, external Ø 166 mm</p>	340.0050.0
<p>3 DDS-secretion canister, plastic 3 l, autoclavable Height 247 mm, external Ø 166 mm</p>	340.0051.0
<p>4 DDS-secretion canister, plastic 5 l, autoclavable Height 396 mm, external Ø 166 mm</p>	340.0052.0
<p>DDS-canister lid, complete set Consisting of:</p> <p>5 DDS canister lid, DDS canister handle, DDS splash protection, DDS hose adapter set, Ø 6 mm + Ø 10 mm, DDS bacterial filter with integrated oversuction stop, hose holder for DDS canister</p>	340.0040.0
<p>6 DDS-canister lid with gaskets, autoclavable</p>	340.0053.0
<p>7 DDS-canister handle, grey, autoclavable</p>	340.0055.0
<p>8 DDS canister handle, blue, autoclavable</p>	340.0326.0
<p>9 DDS-splash protection, silicone, autoclavable</p>	340.0056.0
<p>10 DDS-hose adapter set (Ø 6 mm + Ø 10 mm), autoclavable</p>	340.0057.0
<p>11 DDS-hose holder, autoclavable</p>	340.0066.0
<p>DDS adapter for tissue collector</p> <p>12 Connects the ATMOS® DDS canister to the tissue collector temperature-resistant up to 200 °C</p>	340.0062.0



1 REF 444.0930.0



2 REF 340.0050.0



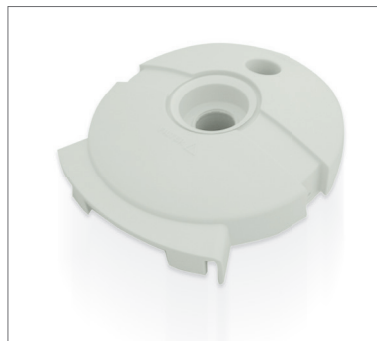
3 REF 340.0051.0



4 REF 340.0052.0



5 REF 340.0040.0



6 REF 340.0053.0



7 REF 340.0055.0



8 REF 340.0326.0



9 REF 340.0056.0



10 REF 340.0057.0



11 REF 340.0066.0



12 REF 340.0062.0

ATMOS® Record 55

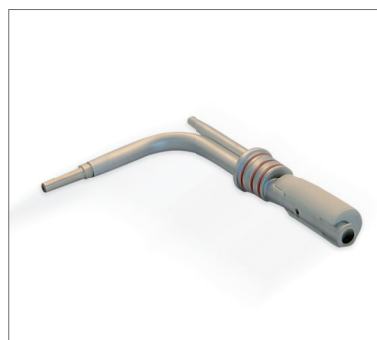
ATMOS® Record 55 with standard rail	REF
<p>[1] Mobile surgical suction unit for high demands Quiet running, infinitely variable vacuum control, damped vacuum display, change-over for canister selection, connection for foot regulator Technical data: Air-flow rate of pump: 55 ± 3 l/min, vacuum -98 kPa/-735 mmHg at sea level, 230 V~, 50/60 Hz, dimensions (H x W x D): 940 x 500 x 390 mm Included in delivery: basic unit, operating instructions, mains cable, standard rail (assembled), Suction hose, Ø 6 mm, L = 2 m, Suction hose, Ø 10 mm, L = 2 m, UFO bacterial filter</p>	443.0700.0
Accessories for ATMOS® Record 55 with standard rail	REF
[2] Secretion canister lid incl. standard rail holder	444.0650.0
[3] Socket nipple set Consisting of: Double socket nipple, hose reducer, mechanical overflow safety	444.0640.0
[4] Graduated secretion canister, 1.5 l Height 192 mm, external Ø 115 mm	444.0032.0
[5] Graduated secretion canister, 3 l Height 247 mm, Ø 145 mm	444.0033.0
[6] Graduated secretion canister, 5 l Height 302 mm, Ø 169 mm	444.0034.0
[7] Safety canister 250 ml (without hydrophobic DDS bacterial filter) overflow protection for ATMOS® surgical suction can be used with hydrophobic DDS bacterial filter (REF 340.0054.0)	444.0646.0
[8] Safety canister 250 ml (with hydrophobic DDS bacterial filter) overflow protection and overflow stop for ATMOS® surgical suction 1 x hydrophobic DDS bacterial filter (REF 340.0054.0) is included	444.0646.1
[9] Serres®-vacuum changeover station Enables the changeover between two secretion canisters. Can be fixed to the standard rail with the Serres® device holder (REF 340.0095.0). Part is not required for DDS!	340.0096.0



1 REF 443.0700.0



2 REF 444.0650.0



3 REF 444.0640.0



4 REF 444.0032.0



5 REF 444.0033.0



6 REF 444.0034.0



7 REF 444.0646.0



8 REF 444.0646.1



9 REF 340.0096.0

Receptal®

Accessories		REF
[1]	Receptal® canister 1,5 l	310.0221.0
[2]	Receptal® canister 2 l	443.0256.0
[3]	Receptal® canister 3 l	444.0157.0
Receptal® package 2 x 1.5 l Consisting of: [4] 2 Receptal®-holder for 1 canister, 2 canisters for Receptal®-suction bags 1.5 l, 2 Receptal®-suction bags 1.5 l (one of them with integrated overflow valve filter), connection hose L = 12 cm. ATTENTION: Basic unit must be ordered separately!		444.0027.0
Receptal® package 1 x 2 l Consisting of: [5] Receptal®-holder for 1 canister, canister for Receptal®-suction bags 2 l, Receptal®-suction bag 2 l, connection hose L = 12 cm. ATTENTION: Basic unit must be ordered separately!		444.0030.0
[6]	Receptal® package 2 x 2 l	444.0028.0
[7]	Receptal® package 1 x 3 l	444.0031.0
[8]	Receptal® package 2 x 3 l	444.0029.0
Consumables		REF
[9]	Receptal® suction bag 1.5 l, with integrated overflow protection Not autoclavable, 50 pcs., change: 1 x per patient	310.0222.2
[10]	Receptal® disposable bag 2 l, without integrated overflow protection Not autoclavable, 50 pcs., change: 1 x per patient	443.0257.0
Receptal® suction bag 2 l, with integrated overflow protection Not autoclavable, 50 pcs., change: 1 x per patient		443.0257.2
[11]	Receptal® suction bag 3 l, without integrated overflow protection For tandem hose system, not autoclavable, 50 pcs., change: 1 x per patient.	444.0153.0
Receptal® suction bag 3 l, with integrated overflow protection Not autoclavable, 50 pcs., change: 1 x per patient.		444.0154.0



1 REF 310.0221.0



2 REF 443.0256.0



3 REF 444.0157.0



4 REF 444.0027.0



5 REF 444.0030.0



6 REF 444.0028.0



7 REF 444.0031.0



8 REF 444.0029.0



9 REF 310.0222.2



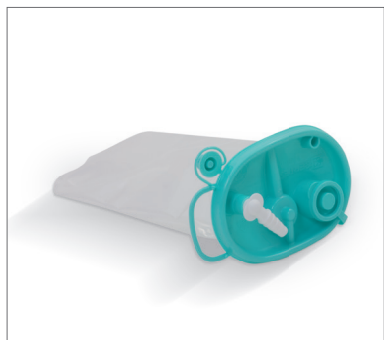
10 REF 443.0257.0



11 REF 444.0153.0

Serres® & Medi-Vac®

Consumables Serres®		REF
1	Serres® suction bag 2 l with gelling agent Not autoclavable, 22 St.	310.0400.0
2	Serres® suction bag, 1 l Not autoclavable, 36 pcs. With angled connection	312.0466.0
3	Serres® suction bag 3 l with gelling agent Not autoclavable, 20 pcs.	310.0401.0
Accessories Serres®		REF
4	Serres® external canister 1 l	312.0465.0
5	Serres® canister 2 l	310.0402.0
6	Serres® canister 3 l	310.0403.0
7	Serres® dev. holder	340.0095.0
Accessories Medi-Vac®		REF
8	Medi-Vac® canister 1 l	312.0473.0
9	Standard rail support For disposable system Medi-Vac® 1 l, 1.5 l	444.0451.0
Consumables Medi-Vac®		REF
10	Medi-Vac® suction bag 1 l Not autoclavable, 50 pcs.	312.0474.0



1 REF 310.0400.0



2 REF 312.0466.0



3 REF 310.0401.0



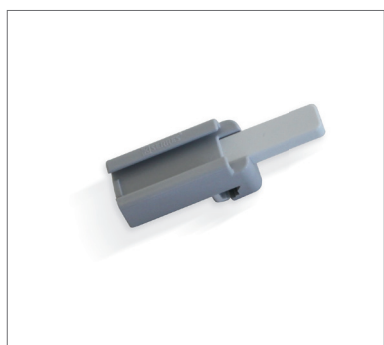
4 REF 312.0465.0



5 REF 310.0402.0



6 REF 310.0403.0



7 REF 340.0095.0



9 REF 444.0451.0



10 REF 312.0474.0



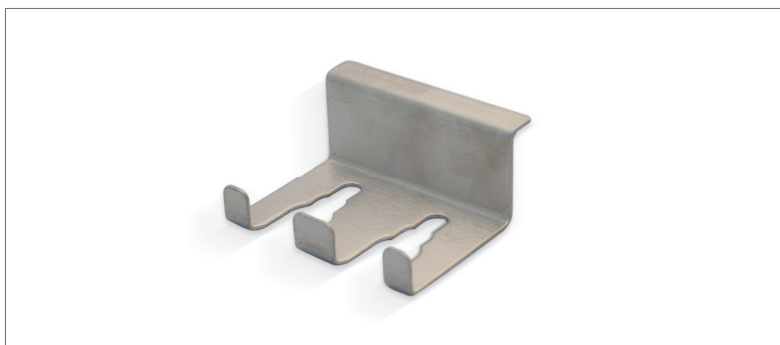
8 REF 312.0473.0

Accessories

Accessories for all ATMOS® Record 55		REF
1	Foot switch For on and off switching.	443.0755.0
2	Foot regulator For the regulation of the vacuum.	443.0770.0
3	Hose support, stainless steel For attaching to standard rail.	320.0611.0
4	Deposit tray, stainless steel With support for rail system.	443.0790.0



1 REF 443.0755.0



2 REF 320.0611.0



3 REF 443.0790.0

Consumables

Consumables	REF
[1] Suction hose, silicone, Ø 10 mm, L= 2m, 1 pc temperature-resistant up to 200 °C	000.0243.0
[2] Suction hose, silicone, Ø 6 mm, L = 2 m, 1 pc temperature-resistant up to 200 °C	000.0361.0
[3] Suction hose, disposable, Ø 6 mm, L = 2.10 m, 50 pcs. Change: 1 x per patient, individually packed	006.0059.0
[4] Bacterial filter for ATMOS® DDS secretion canister, 10 pcs. disposable, not autoclavable, For hygienic reasons a bi-weekly ex- change is recommended. In case of contamination or new patient the filter must immediately be replaced	340.0054.0
[5] Tissue collector 300 ml, disposable Ø 6 mm, change: 1 x per patient	340.0061.0
[6] Collector sieve 50 ml, disposable Ø 6 mm, change: 1 x per patient	401.0555.0
[7] Hydrophobic bacterial and viral filter, Ø 8 mm for use with suction hose Ø 6-8 mm 99.9999% bacterial and viral efficiency disposable, not autoclavable, change: 1 x per patient	443.0738.0
[8] Bacterial filter FFG - hydrophobic	444.0082.0
[9] Hydrophobic bacterial and viral filter, Ø 11 mm for use with suction hose Ø 10-11 mm 99.9999% bacterial and viral efficiency disposable, not autoclavable, change: 1 x per patient	444.0628.0



1 REF 000.0243.0



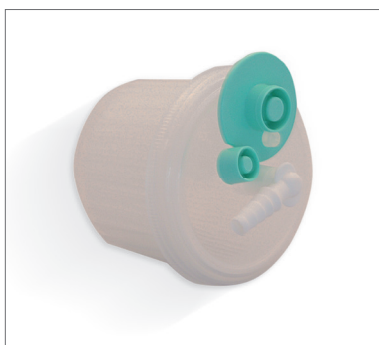
3 REF 006.0059.0



2 REF 000.0361.0



4 REF 340.0054.0



5 REF 340.0061.0



6 REF 401.0555.0



7 REF 443.0738.0



8 REF 444.0082.0



9 REF 444.0628.0



MedizinTechnik

ATMOS MedizinTechnik GmbH & Co. KG

Ludwig-Kegel-Str. 16

79853 Lenzkirch / Germany

Tel: +49 7653 689-374

ApplicationSolutions@atmosmed.com

www.atmosmed.com